



---

## CERULIUM TERADATA COURSE CATALOG

---

*Cerulium Corporation has provided quality Teradata education and consulting expertise for over seven years.  
We offer customized solutions to maximize your warehouse.*

**Prepared by:**

Cerulium Corporation  
Phone: 803.719.6782  
Email: [sales@cerulium.com](mailto:sales@cerulium.com)

## DOCUMENT LINK LIST

Click on any of the following links to go directly to that point in this catalog.

### GENERAL

[Cerulium Courses by Category](#)  
[Job/Role Descriptions](#)

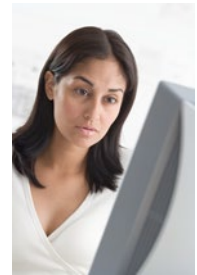
### COURSES BY JOB/ROLE

[Application Specialist Courses](#)  
[Business Users Courses](#)  
[Data Modeler Courses](#)  
[Database Administrator Courses](#)  
[Database Architect/Designer Courses](#)  
[Project/Program Management Courses](#)  
[Technical Specialist Courses](#)

### COURSE DESCRIPTIONS

[INTRODUCTION TO TERADATA ARCHITECTURE \(BASICS\)](#)  
[TERADATA SQL COMPLETE COURSE \(\\*\)](#)  
[TERADATA PHYSICAL DATABASE DESIGN AND IMPLEMENTATION \(\\*\)](#)  
[TERADATA LOAD UTILITIES \(\\*\)](#)  
[TERADATA SQL FOR ADVANCED USERS \(\\*\)](#)  
[TERADATA PHYSICAL DATABASE TUNING – TD15 and TD16](#)  
[TERADATA APPLICATION DESIGN AND DEVELOPMENT \(\\*\)](#)  
[TERADATA WAREHOUSE ADMINISTRATION \(\\*\)](#)  
[TERADATA WAREHOUSE MANAGEMENT](#)  
[TERADATA SQL TD15 and TD16 FEATURES OVERVIEW \(\\*\)](#)  
[TERADATA SYSTEMS PERFORMANCE – TD15 and TD16 \(\\*\)](#)  
[TERADATA TD15 and TD16 DIFFERENCES](#)  
[INTRODUCTION TO LOGICAL DATA MODELING \(\\*\)](#)  
[TERADATA BOOT-CAMP COURSE](#)  
[TERADATA SQL FOR INTERMEDIATE USERS](#)  
[TERADATA SQL FOR BUSINESS USERS](#)  
[TERADATA PARALLEL TRANSPORTER \(TPT\)](#)  
[HADOOP INTEROPERABILITY WITH TERADATA \(\\*\\*\)](#)  
[TERADATA UNIFIED DATA ARCHITECTURE \(UDA\) – BIG DATA TRAINING \(\\*\\*\)](#)  
[INTRODUCTION TO TERADATA – ONLINE COURSE \(\\*\\*\)](#)  
[LINUX SYSTEM ADMINISTRATION \(\\*\\*\)](#)  
[SHELL PROGRAMMING \(\\*\\*\)](#)

[Return to top](#)



## CERULIUM COURSES BY CATEGORY

### Data Warehouse Overview Courses

<b>Click on a course title to view its description</b>
<a href="#">INTRODUCTION TO TERADATA ARCHITECTURE (BASICS)</a>
<a href="#">INTRODUCTION TO LOGICAL DATA MODELING (*)</a>
<a href="#">TERADATA TD15 and TD16 DIFFERENCES</a>
<a href="#">TERADATA BOOT-CAMP COURSE</a>

### Application Design & Development Courses

<b>Click on a course title to view its description</b>
<a href="#">TERADATA APPLICATION DESIGN AND DEVELOPMENT (*)</a>
<a href="#">TERADATA SQL COMPLETE COURSE (*)</a>
<a href="#">TERADATA SQL FOR BUSINESS USERS</a>
<a href="#">TERADATA SQL FOR INTERMEDIATE USERS</a>
<a href="#">TERADATA SQL FOR ADVANCED USERS (*)</a>
<a href="#">TERADATA SQL TD15 and TD16 FEATURES OVERVIEW (*)</a>
<a href="#">TERADATA LOAD UTILITIES (*)</a>
<a href="#">TERADATA PARALLEL TRANSPORTER (TPT) (*)</a>



### Database Administration, Management, and Tuning Courses

<b>Click on a course title to view its description</b>
<a href="#">TERADATA WAREHOUSE ADMINISTRATION (*)</a>
<a href="#">TERADATA WAREHOUSE MANAGEMENT</a>
<a href="#">TERADATA PHYSICAL DATABASE DESIGN AND IMPLEMENTATION (*)</a>
<a href="#">TERADATA PHYSICAL DATABASE TUNING – TD15 and TD16</a>
<a href="#">TERADATA SYSTEMS PERFORMANCE – TD15 and TD16 (*)</a>

### CERULIUM COURSE OFFERINGS

<b>Click on a course title to view its description</b>
<a href="#">HADOOP INTEROPERABILITY WITH TERADATA(*)</a>
<a href="#">TERADATA UNIFIED DATA ARCHITECTURE (UDA) – BIG DATA TRAINING(*)</a>
<a href="#">INTRODUCTION TO TERADATA – ONLINE COURSE (**)</a>
<a href="#">LINUX SYSTEM ADMINISTRATION (**)</a>
<a href="#">SHELL PROGRAMMING (**)</a>

[Return to Link List](#)

(\*) = Custom Cerulium Course

(\*\*) = Future Course Offering

## **JOB/ROLE DESCRIPTION**

### [APPLICATION SPECIALIST](#)

The application specialist is responsible for developing and maintaining business applications, as well as Extract, Transform, and Load (ETL) applications.

### [BUSINESS USER](#)

The business user uses the data from the data warehouse in support of their business organization. The business user may access the warehouse using a BI tool, a specialized application, or SQL.

### [DATA MODELER](#)

The data modeler transforms business information requirements into a relational data model that becomes the foundation of the data warehouse. The data modeler may also create analytical models for base on advanced data mining requirements.

### [DATABASE ADMINISTRATOR](#)

The DBA may be responsible for monitoring and maintaining the entire production system, or may only be responsible for a business unit's use of the system. DBA duties may include capacity planning, application and system tuning, security, backup and recovery, creating, altering, and dropping database objects, and scheduling and performing maintenance.

### [DATABASE ARCHITECT / DESIGNER](#)

The data warehouse architect/designer is responsible for identifying the hardware and software for the data warehouse, which includes things like protocols, product technical requirements, interfaces, standards, and services.

### [PROJECT / PROGRAM MANAGEMENT](#)

The project/program manager is responsible for the ongoing management of the Teradata warehouse implementation.

### [TECHNICAL SPECIALIST](#)

The technical specialist transforms a logical data model into a high performance physical model for the Teradata data warehouse. This may include creating and testing table structures, partitioned and non-partitioned indexes, views, triggers, etc. The technical specialist also designs and constructs the extract, data transforms, and data loads from external systems.

[Return to Link List](#)



## APPLICATION SPECIALIST CURRICULUM



R/O	Click on a course title to view its description
R	<a href="#">INTRODUCTION TO TERADATA ARCHITECTURE (BASICS)</a>
R	<a href="#">TERADATA SQL COMPLETE COURSE (*)</a>
R	<a href="#">TERADATA PHYSICAL DATABASE DESIGN AND IMPLEMENTATION (*)</a>
R	<a href="#">TERADATA LOAD UTILITIES (*)</a>
R	<a href="#">TERADATA PARALLEL TRANSPORTER (TPT) (*)</a>
R	<a href="#">TERADATA SQL FOR ADVANCED USERS (*)</a>
O	<a href="#">TERADATA PHYSICAL DATABASE TUNING – TD15 and TD16</a>
	<a href="#">TERADATA APPLICATION DESIGN AND DEVELOPMENT (*)</a>
	<a href="#">TERADATA WAREHOUSE ADMINISTRATION (*)</a>
	<a href="#">TERADATA WAREHOUSE MANAGEMENT</a>
O	<a href="#">TERADATA SQL TD15 and TD16 FEATURES OVERVIEW (*)</a>
R	<a href="#">TERADATA SYSTEMS PERFORMANCE – TD15 and TD16 (*)</a>
R	<a href="#">TERADATA TD15 and TD16 DIFFERENCES</a>
R	<a href="#">INTRODUCTION TO LOGICAL DATA MODELING (*)</a>
O	<a href="#">TERADATA BOOT-CAMP COURSE</a>
R	<a href="#">TERADATA SQL FOR INTERMEDIATE USERS</a>
O	<a href="#">TERADATA SQL FOR BUSINESS USERS</a>
R	<a href="#">HADOOP INTEROPERABILITY WITH TERADATA (**)</a>
R	<a href="#">TERADATA UNIFIED DATA ARCHITECTURE (UDA) – BIG DATA TRAINING (**)</a>
O	<a href="#">INTRODUCTION TO TERADATA – ONLINE COURSE (**)</a>
R	<a href="#">LINUX SYSTEM ADMINISTRATION (**)</a>
R	<a href="#">SHELL PROGRAMMING (**)</a>

- R** = Recommended course
- O** = Optional course
- (\*)** = Custom Cerulium Course
- (\*\*)** = Future Course Offering

[Return to Link List](#)

## BUSINESS USERS CURRICULUM

R/O	Click on a course title to view its description
R	<a href="#">INTRODUCTION TO TERADATA ARCHITECTURE (BASICS)</a>
O	<a href="#">TERADATA SQL COMPLETE COURSE (*)</a>
	<a href="#">TERADATA PHYSICAL DATABASE DESIGN AND IMPLEMENTATION (*)</a>
O	<a href="#">TERADATA LOAD UTILITIES (*)</a>
O	<a href="#">TERADATA PARALLEL TRANSPORTER (TPT) (*)</a>
O	<a href="#">TERADATA SQL FOR ADVANCED USERS (*)</a>
	<a href="#">TERADATA PHYSICAL DATABASE TUNING – TD15 and TD16</a>
	<a href="#">TERADATA APPLICATION DESIGN AND DEVELOPMENT (*)</a>
	<a href="#">TERADATA WAREHOUSE ADMINISTRATION (*)</a>
	<a href="#">TERADATA WAREHOUSE MANAGEMENT</a>
O	<a href="#">TERADATA SQL TD15 and TD16 FEATURES OVERVIEW (*)</a>
	<a href="#">TERADATA SYSTEMS PERFORMANCE – TD15 and TD16 (*)</a>
O	<a href="#">TERADATA TD15 and TD16 DIFFERENCES</a>
	<a href="#">INTRODUCTION TO LOGICAL DATA MODELING (*)</a>
O	<a href="#">TERADATA BOOT-CAMP COURSE</a>
O	<a href="#">TERADATA SQL FOR INTERMEDIATE USERS</a>
R	<a href="#">TERADATA SQL FOR BUSINESS USERS</a>
O	<a href="#">HADOOP INTEROPERABILITY WITH TERADATA (**)</a>
O	<a href="#">TERADATA UNIFIED DATA ARCHITECTURE (UDA) – BIG DATA TRAINING (**)</a>
O	<a href="#">INTRODUCTION TO TERADATA – ONLINE COURSE (**)</a>
	<a href="#">LINUX SYSTEM ADMINISTRATION (**)</a>
	<a href="#">SHELL PROGRAMMING (**)</a>

R = Recommended course

O = Optional course

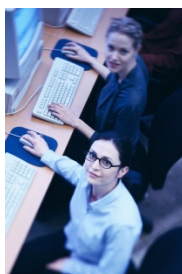
(\*) = Custom Cerulium Course

(\*\*) = Future Course Offering

[Return to Link List](#)



## DATA MODELER CURRICULUM



R/O	Click on a course title to view its description
R	<a href="#">INTRODUCTION TO TERADATA ARCHITECTURE (BASICS)</a>
R	<a href="#">TERADATA SQL COMPLETE COURSE (*)</a>
	<a href="#">TERADATA PHYSICAL DATABASE DESIGN AND IMPLEMENTATION (*)</a>
O	<a href="#">TERADATA LOAD UTILITIES (*)</a>
O	<a href="#">TERADATA PARALLEL TRANSPORTER (TPT) (*)</a>
	<a href="#">TERADATA SQL FOR ADVANCED USERS (*)</a>
	<a href="#">TERADATA PHYSICAL DATABASE TUNING – TD15 and TD16</a>
	<a href="#">TERADATA APPLICATION DESIGN AND DEVELOPMENT (*)</a>
	<a href="#">TERADATA WAREHOUSE ADMINISTRATION (*)</a>
	<a href="#">TERADATA WAREHOUSE MANAGEMENT</a>
O	<a href="#">TERADATA SQL TD15 and TD16 FEATURES OVERVIEW (*)</a>
	<a href="#">TERADATA SYSTEMS PERFORMANCE – TD15 and TD16 (*)</a>
O	<a href="#">TERADATA TD15 and TD16 DIFFERENCES</a>
R	<a href="#">INTRODUCTION TO LOGICAL DATA MODELING (*)</a>
O	<a href="#">TERADATA BOOT-CAMP COURSE</a>
	<a href="#">TERADATA SQL FOR INTERMEDIATE USERS</a>
	<a href="#">TERADATA SQL FOR BUSINESS USERS</a>
R	<a href="#">HADOOP INTEROPERABILITY WITH TERADATA (**)</a>
R	<a href="#">TERADATA UNIFIED DATA ARCHITECTURE (UDA) – BIG DATA TRAINING (**)</a>
O	<a href="#">INTRODUCTION TO TERADATA – ONLINE COURSE (**)</a>
	<a href="#">LINUX SYSTEM ADMINISTRATION (**)</a>
	<a href="#">SHELL PROGRAMMING (**)</a>

- R = Recommended course
- O = Optional course
- (\*) = Custom Cerulium Course
- (\*\*) = Future Course Offering

[Return to Link List](#)

## DATABASE ADMINISTRATOR CURRICULUM

R/O	Click on a course title to view its description
R	<a href="#">INTRODUCTION TO TERADATA ARCHITECTURE (BASICS)</a>
R	<a href="#">TERADATA SQL COMPLETE COURSE (*)</a>
R	<a href="#">TERADATA PHYSICAL DATABASE DESIGN AND IMPLEMENTATION (*)</a>
R	<a href="#">TERADATA LOAD UTILITIES (*)</a>
O	<a href="#">TERADATA PARALLEL TRANSPORTER (TPT) (*)</a>
R	<a href="#">TERADATA SQL FOR ADVANCED USERS (*)</a>
R	<a href="#">TERADATA PHYSICAL DATABASE TUNING – TD15 and TD16</a>
	<a href="#">TERADATA APPLICATION DESIGN AND DEVELOPMENT (*)</a>
R	<a href="#">TERADATA WAREHOUSE ADMINISTRATION (*)</a>
R	<a href="#">TERADATA WAREHOUSE MANAGEMENT</a>
O	<a href="#">TERADATA SQL TD15 and TD16 FEATURES OVERVIEW (*)</a>
R	<a href="#">TERADATA SYSTEMS PERFORMANCE – TD15 and TD16 (*)</a>
R	<a href="#">TERADATA TD15 and TD16 DIFFERENCES</a>
R	<a href="#">INTRODUCTION TO LOGICAL DATA MODELING (*)</a>
O	<a href="#">TERADATA BOOT-CAMP COURSE</a>
	<a href="#">TERADATA SQL FOR INTERMEDIATE USERS</a>
	<a href="#">TERADATA SQL FOR BUSINESS USERS</a>
O	<a href="#">HADOOP INTEROPERABILITY WITH TERADATA (**)</a>
O	<a href="#">TERADATA UNIFIED DATA ARCHITECTURE (UDA) – BIG DATA TRAINING (**)</a>
O	<a href="#">INTRODUCTION TO TERADATA – ONLINE COURSE (**)</a>
R	<a href="#">LINUX SYSTEM ADMINISTRATION (**)</a>
R	<a href="#">SHELL PROGRAMMING (**)</a>

R = Recommended course

O = Optional course

(\*) = Custom Cerulium Course

(\*\*) = Future Course Offering

[Return to Link List](#)







## DATABASE ARCHITECT / DESIGNER CURRICULUM

R/O	Click on a course title to view its description
R	<a href="#">INTRODUCTION TO TERADATA ARCHITECTURE (BASICS)</a>
R	<a href="#">TERADATA SQL COMPLETE COURSE (*)</a>
R	<a href="#">TERADATA PHYSICAL DATABASE DESIGN AND IMPLEMENTATION (*)</a>
R	<a href="#">TERADATA LOAD UTILITIES (*)</a>
R	<a href="#">TERADATA PARALLEL TRANSPORTER (TPT) (*)</a>
	<a href="#">TERADATA SQL FOR ADVANCED USERS (*)</a>
O	<a href="#">TERADATA PHYSICAL DATABASE TUNING – TD15 and TD16</a>
	<a href="#">TERADATA APPLICATION DESIGN AND DEVELOPMENT (*)</a>
	<a href="#">TERADATA WAREHOUSE ADMINISTRATION (*)</a>
	<a href="#">TERADATA WAREHOUSE MANAGEMENT</a>
O	<a href="#">TERADATA SQL TD15 and TD16 FEATURES OVERVIEW (*)</a>
O	<a href="#">TERADATA SYSTEMS PERFORMANCE – TD15 and TD16 (*)</a>
O	<a href="#">TERADATA TD15 and TD16 DIFFERENCES</a>
O	<a href="#">INTRODUCTION TO LOGICAL DATA MODELING (*)</a>
O	<a href="#">TERADATA BOOT-CAMP COURSE</a>
	<a href="#">TERADATA SQL FOR INTERMEDIATE USERS</a>
	<a href="#">TERADATA SQL FOR BUSINESS USERS</a>
O	<a href="#">HADOOP INTEROPERABILITY WITH TERADATA (**)</a>
O	<a href="#">TERADATA UNIFIED DATA ARCHITECTURE (UDA) – BIG DATA TRAINING (**)</a>
O	<a href="#">INTRODUCTION TO TERADATA – ONLINE COURSE (**)</a>
	<a href="#">LINUX SYSTEM ADMINISTRATION (**)</a>
	<a href="#">SHELL PROGRAMMING (**)</a>

R = Recommended course  
 O = Optional course  
 (\*) = Custom Cerulium Course  
 (\*\*) = Future Course Offering

[Return to Link List](#)

## PROJECT / PROGRAM MANAGEMENT CURRICULUM

R/O	Click on a course title to view its description
R	<a href="#">INTRODUCTION TO TERADATA ARCHITECTURE (BASICS)</a>
O	<a href="#">TERADATA SQL COMPLETE COURSE (*)</a>
	<a href="#">TERADATA PHYSICAL DATABASE DESIGN AND IMPLEMENTATION (*)</a>
	<a href="#">TERADATA LOAD UTILITIES (*)</a>
	<a href="#">TERADATA PARALLEL TRANSPORTER (TPT) (*)</a>
	<a href="#">TERADATA SQL FOR ADVANCED USERS (*)</a>
	<a href="#">TERADATA PHYSICAL DATABASE TUNING – TD15 and TD14</a>
	<a href="#">TERADATA APPLICATION DESIGN AND DEVELOPMENT (*)</a>
	<a href="#">TERADATA WAREHOUSE ADMINISTRATION (*)</a>
	<a href="#">TERADATA WAREHOUSE MANAGEMENT</a>
O	<a href="#">TERADATA SQL TD15 and TD16 FEATURES OVERVIEW (*)</a>
	<a href="#">TERADATA SYSTEMS PERFORMANCE – TD15 and TD16 (*)</a>
	<a href="#">TERADATA TD15 and TD16 DIFFERENCES</a>
O	<a href="#">INTRODUCTION TO LOGICAL DATA MODELING (*)</a>
O	<a href="#">TERADATA BOOT-CAMP COURSE</a>
	<a href="#">TERADATA SQL FOR INTERMEDIATE USERS</a>
O	<a href="#">TERADATA SQL FOR BUSINESS USERS</a>
O	<a href="#">HADOOP INTEROPERABILITY WITH TERADATA (**)</a>
O	<a href="#">TERADATA UNIFIED DATA ARCHITECTURE (UDA) – BIG DATA TRAINING (**)</a>
O	<a href="#">INTRODUCTION TO TERADATA – ONLINE COURSE (**)</a>
	<a href="#">LINUX SYSTEM ADMINISTRATION (**)</a>
	<a href="#">SHELL PROGRAMMING (**)</a>



R = Recommended course

O = Optional course

(\*) = Custom Cerulium Course

(\*\*) = Future Course Offering

[Return to Link List](#)



## TECHNICAL SPECIALIST CURRICULUM

R/O	Click on a course title to view its description
R	<a href="#">INTRODUCTION TO TERADATA ARCHITECTURE (BASICS)</a>
R	<a href="#">TERADATA SQL COMPLETE COURSE (*)</a>
R	<a href="#">TERADATA PHYSICAL DATABASE DESIGN AND IMPLEMENTATION (*)</a>
R	<a href="#">TERADATA LOAD UTILITIES (*)</a>
R	<a href="#">TERADATA PARALLEL TRANSPORTER (TPT) (*)</a>
R	<a href="#">TERADATA SQL FOR ADVANCED USERS (*)</a>
R	<a href="#">TERADATA PHYSICAL DATABASE TUNING – TD15 and TD14</a>
	<a href="#">TERADATA APPLICATION DESIGN AND DEVELOPMENT (*)</a>
	<a href="#">TERADATA WAREHOUSE ADMINISTRATION (*)</a>
	<a href="#">TERADATA WAREHOUSE MANAGEMENT</a>
O	<a href="#">TERADATA SQL TD15 and TD16 FEATURES OVERVIEW (*)</a>
R	<a href="#">TERADATA SYSTEMS PERFORMANCE – TD15 and TD16 (*)</a>
R	<a href="#">TERADATA TD15 and TD16 DIFFERENCES</a>
R	<a href="#">INTRODUCTION TO LOGICAL DATA MODELING (*)</a>
O	<a href="#">TERADATA BOOT-CAMP COURSE</a>
O	<a href="#">TERADATA SQL FOR INTERMEDIATE USERS</a>
O	<a href="#">TERADATA SQL FOR BUSINESS USERS</a>
O	<a href="#">HADOOP INTEROPERABILITY WITH TERADATA (**)</a>
O	<a href="#">TERADATA UNIFIED DATA ARCHITECTURE (UDA) – BIG DATA TRAINING (**)</a>
O	<a href="#">INTRODUCTION TO TERADATA – ONLINE COURSE (**)</a>
O	<a href="#">LINUX SYSTEM ADMINISTRATION (**)</a>
O	<a href="#">SHELL PROGRAMMING (**)</a>

**R** = Recommended course

**O** = Optional course

**(\*)** = Custom Cerulium Course

**(\*\*)** = Future Course Offering

[Return to Link List](#)

## CERULIUM TERADATA COURSE OFFERING - DESCRIPTIONS

### **CER001 - INTRODUCTION TO TERADATA ARCHITECTURE (BASICS):**

(1 Day - Lecture)

This course will provide a basic understanding of how Teradata works. Course topics include Teradata Architecture, AMPs, PEs, BYNET, Data Modeling, Primary Key, Primary Index, Data Layout, Hashing, and Row ID. This course also covers a base understanding of features such as RAID, Secondary Indexes, spool files, partitioning, data protection, and Teradata utilities.

[Return to Link List](#)

### **CER002 - TERADATA SQL COMPLETE COURSE (\*):**

(1-4 Days - 10% Lecture / 90% Hands on)

This course offers practical, hands-on experience with retrieving and manipulating data with Teradata Structured Query Language (SQL) utilizing both ANSI standard conventions and Teradata extensions. (\*) Based on the requirements and duration of days, this course can be customized as a Teradata SQL Basic or Intermediate Course.

*Custom Cerulium Course. Please consult your Cerulium education specialists who will assist you in determining the best course(s) based on your Teradata experience, and learning requirements.*

[Return to Link List](#)

### **CER003 - TERADATA PHYSICAL DATABASE DESIGN AND IMPLEMENTATION (\*):**

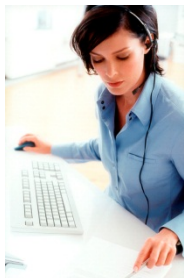
(2-3 Days - 60% Lecture / 40% Hands on)

This course provides a comprehensive and thorough understanding on how Teradata operates. Topics include hardware configurations, software components, DB Objects, data distribution, indexing, join strategies, EXPLAINS, statistics, spool files, de-normalization, partitioning, and data protection. This course also reviews the Teradata utilities, tools, macros, stored procedures, triggers, and UDF's along with providing the methodology for transitioning a logical to physical model.

*Custom Cerulium Course. Please consult your Cerulium education specialists who will assist you in determining the best course(s) based on your Teradata experience, and learning requirements.*

[Return to Link List](#)





**CER004 - TERADATA LOAD UTILITIES (\*):**

(1-3 Days - 10% Lecture / 90% Hands on)

Course highlights include how to use BTEQ, FASTLOAD, FASTEXPORT, MULTILoad, TPUMP, and TPT as batch inserts, updates and deletes. This course will also cover how to use and understand the strengths and performance capabilities of each; choosing the best utility for any given application or set of production requirements.

*Custom Cerulium Course. Please consult your Cerulium education specialists who will assist you in determining the best course(s) based on your Teradata experience, and learning requirements.*

[Return to Link List](#)

**CER005 - TERADATA SQL FOR ADVANCED USERS (\*):**

(1-3 Days - 10% Lecture / 90% Hands on)

This course is designed for advanced level developers, programmers, and power users who write queries utilizing the more advanced features of SQL. In addition, this course has been updated to reflect the latest features and functions of Teradata.

*Custom Cerulium Course. Please consult your Cerulium education specialists who will assist you in determining the best course(s) based on your Teradata experience, and learning requirements.*

[Return to Link List](#)

**CER006 - TERADATA PHYSICAL DATABASE TUNING – TD15 and TD16:**

(2 days: 25% Lecture / 75% Hands on)

This course focuses on performance and tuning functions Teradata, and provides an in-depth examination of the processes and procedures to follow once a Teradata Database is in production. Key areas include troubleshooting performance issues and tuning the various system components for maximum performance. Additional topics include locking levels, PPI (partitioned primary indexes), join strategies, Statistics, Secondary Indexes, Join Indexes, Hash Indexes, Aggregate Join Indexes, Global and Volatile Temporary tables. The EXPLAIN facility is also introduced and will be used in analyzing query performance.

[Return to Link List](#)

### **CER007 - TERADATA APPLICATION DESIGN AND DEVELOPMENT (\*):**

(1-3 Days - 60% Lecture / 40% Hands on)

The course covers the various tools, utilities, and built-in features available in Teradata to assist in application development. At the completion of the course, the student will have solid foundation of the application development tools available and their application uses in order to help optimize performance. In addition, the course will provide a base understanding of the steps in the development life cycle along with comparing the strengths and functionality of the various tools. Other topics covered include join strategies, referential integrity, triggers, stored procedures and identity columns along with understanding how these features impact and optimize this parallel architecture.

*Custom Cerulium Course. Please consult your Cerulium education specialists who will assist you in determining the best course(s) based on your Teradata experience, and learning requirements.*

[Return to Link List](#)

### **CER008 - TERADATA WAREHOUSE ADMINISTRATION (\*):**

(2-3 Days - 20% Lecture / 80% Hands on)

This course provides an in-depth study of various administrative activities associated with Teradata administration. Subjects covered include understanding databases, users, space allocation, and external connectivity to the Teradata system. Additional topics will include access rights, roles, profiles, and built in accounting functions. This course will also address several administrative utilities such as: DBW, Ferret, Checktable, and Recovery Manager. This course will also include the Recovery Utilities, Archive, Permanent Journals, and Dual systems.

*Custom Cerulium Course. Please consult your Cerulium education specialists who will assist you in determining the best course(s) based on your Teradata experience, and learning requirements.*

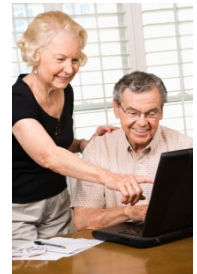
[Return to Link List](#)

### **CER009 - TERADATA WAREHOUSE MANAGEMENT:**

(2 days: 50% Lecture / 50% Hands on)

This course focuses on the usage of tools available to Database Administrators to effectively manage their Teradata system. Included in the course is an in-depth study of the installation and use of the Teradata Manager suite of tools. This class will also provide a solid understanding of the various ways to monitor performance in the system. Topics include: PMON, ResUsage, and Teradata Manager. Also covered in this course is Teradata Active Systems Management which includes Priority Scheduler, and the DBS Control Utility.

[Return to Link List](#)



### **CER010 - TERADATA SQL TD15 and TD16 FEATURES OVERVIEW (\*):**

(1-2 days: Lecture)

This course provides a comprehensive overview of the features and functionality in the latest release of Teradata. In addition, this course will highlight the differences between Teradata and ANSI SQL for those individuals who are familiar with standard, non-Teradata SQL. This course will also identify the Teradata differences to ANSI SQL and how these commands function in a parallel processing environment. Note: The above courses will be updated to reflect the latest updates.

*Custom Cerulium Course. Please consult your Cerulium education specialists who will assist you in determining the best course(s) based on your Teradata experience, and learning requirements.*

[Return to Link List](#)

### **CER011 - TERADATA SYSTEMS PERFORMANCE – TD15 and TD16 (\*):**

(1-3 days: 10% Lecture / 90% Hands on)

This course addresses the tuning and performance functions of the Teradata 13 and 14 database versions, and provides an in-depth examination of the processes and procedures once the Teradata database is in production. Troubleshooting performance issues and tuning the various system components for maximum performance. Key topic areas also covered are coding strategies for joins and the various indexes. The EXPLAIN facility is introduced its use in analyzing query performance is explored.

*Custom Cerulium Course. Please consult your Cerulium education specialists who will assist you in determining the best course(s) based on your Teradata experience, and learning requirements.*

[Return to Link List](#)

### **CER012 - TERADATA TD15 and TD16 DIFFERENCES:**

(1 day: Lecture)

This course provides details on the new features and functions of Teradata 15 and 16 database versions. Topics include tools, utilities; Backup, Archive and Restore, Write Ahead Logging, Big Integer and Large Decimal Support, Optimize PPI/MLPPI/NUSI /USI Maintenance and Rollback Performance, New Password Encryption Algorithm, security enhancements, Store Procedures and UDF Packaging. For each new feature, the course provides a description, its business value, how to implement and configure the new features.

[Return to Link List](#)



### **CER013 - INTRODUCTION TO LOGICAL DATA MODELING (\*):**

(1-3 days: 70% Lecture / 30% Hands on)

This course covers the basics of Logical Data Modeling (LDM). The student will learn the theory and rules used to design, develop, and deploy logical data models. Additional topics covered include Entities, Attributes, Normalization, and reading and interpreting a simple (LDM). This class will also describe the importance of creating good logical data models in order to solve both technical and business problems.

*Custom Cerulium Course. Please consult your Cerulium education specialists who will assist you in determining the best course(s) based on your Teradata experience, and learning requirements.*

[Return to Link List](#)

### **CER014 - TERADATA BOOT-CAMP COURSE:**

(5 days: 25% Lecture / 75% Hands on)

This primary objective of this course is to provide students with a solid understanding and base knowledge of Teradata Data Warehouse system. Topics include Introduction to Teradata Architecture (Basics) (1 day), Teradata SQL (3 days), and Teradata Application Utilities (1 day). Complete with hands-on training, continuous interaction, and real world examples, the goal is to make everyone attending this training Teradata ready.

[Return to Link List](#)

### **CER015 - TERADATA SQL FOR INTERMEDIATE USERS:**

(2 Days - 10% Lecture / 90% Hands on)

This course offers practical, hands-on experience with retrieving and manipulating data with Teradata Structured Query Language (SQL) utilizing both ANSI standard conventions and Teradata extensions. This course is designed for business users, developers, programmers, and power users who write queries using basic SQL techniques. In addition, this course has been updated to reflect the latest features and functions of Teradata

[Return to Link List](#)







**CER016 - TERADATA SQL FOR BUSINESS USERS:**

(3 Days - 20% Lecture / 80% Hands on)

This course is focused on the Business Users and Data Analysts of the data warehouse who want to efficiently access and manipulate data from the data warehouse. The training covers data distribution, access, storage and Teradata terminology. It also focuses on how to use the Teradata SQL Assistant to submit SQL statements along with how to integrate the result sets with Excel. It also offers practical, hands-on experience with retrieving and manipulating data with Teradata SQL using both ANSI standard conventions and Teradata extensions to the language.

[Return to Link List](#)

**CER017 - TERADATA PARALLEL TRANSPORTER (TPT):**

(2 Days - 20% Lecture / 80% Hands on)

This course provides detailed training of the features and functions of Teradata Parallel Transporter (TPT). It explores the product capabilities and analyzes how the product fits into your environment as a load/unload tool. Training also demonstrates the performance expectations of the 'operators' provided by TPT along with the seamless features that fit into your enterprise environment. It also explores and demonstrates the features and flexibilities of a single scripting language for all loading and unloading operations along with discuss how these tools are incorporated into your environment.

[Return to Link List](#)

## **HADOOP INTEROPERABILITY WITH TERADATA (\*) – (Available)**

In this course you will learn how Teradata Interoperates with Hadoop. This module also highlights how all the pieces fit together specifically on how Teradata can seamlessly access the data housed in Hadoop. You will learn how to load data in Hadoop, develop codes to access Hadoop via Teradata, and ultimately, demonstration to how create a transparent semantic layer to access data in Hadoop. You will also be introduced to other UDA components such as Teradata Aster.

*Custom Cerulium Course. Please consult your Cerulium education specialists who will assist you in determining the best course(s) based on your Teradata experience, and learning requirements.*

[Return to Link List](#)

## **TERADATA UNIFIED DATA ARCHITECTURE (UDA) – BIG DATA TRAINING (\*) – (Available)**

This module highlights the Unified Data Architecture (UDA) solution. The focus here is to understand the UDA which incorporates Teradata, Teradata Aster, and Hadoop along with the exploring the benefits of this solution. Topics include, Big Data Architecture, Data Discovery and Manipulation Techniques, SQL-H, Aster Connectors, SQL-MapReduce, Iteration Processes, and Data Visualization.

*Custom Cerulium Course. Please consult your Cerulium education specialists who will assist you in determining the best course(s) based on your Teradata experience, and learning requirements.*

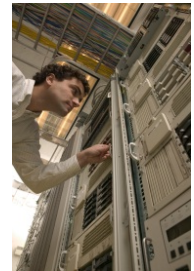
[Return to Link List](#)

## **INTRODUCTION TO TERADATA ARCHITECTURE (BASICS) – ONLINE COURSE (\*\*) – (Available 2H19)**

This **online** course will provide a basic understanding of how Teradata works. Course topics include Teradata Architecture, AMPs, PEs, BYNET, Data Modeling, Primary Key, Primary Index, Data Layout, Hashing, and Row ID. This course also covers a base understanding of features such as RAID, Secondary Indexes, spool files, partitioning, data protection, and Teradata utilities.

*Online Cerulium Course. Please consult your Cerulium education specialists who will assist you in determining the best course(s) based on your Teradata experience, and learning requirements.*

[Return to Link List](#)



## **LINUX SYSTEM ADMINISTRATION (\*\*)** – (Available 2H19)

This course covers many of the tasks a Linux System Administrator performs, such as:

- Configuring hardware
- Installing the operating system
- Installing application software
- Implementing system security
- Configuring the kernel
- Creating users and groups
- Updating software
- Performance tuning
- Disaster recovery
- Capacity planning
- Network administration



*Custom Cerulium Course. Please consult your Cerulium education specialists who will assist you in determining the best course(s) based on your Teradata experience, and learning requirements.*

[Return to Link List](#)

## **SHELL PROGRAMMING (\*\*)** – (Available 2H19)

Shell programming can be used to automate many tasks performed in UNIX and/or Linux. This course covers various topics such as:

- Getting started
- Shell variables and the environment
- Conditionals
- Bash loops
- Shell redirection
- Pipes and filters
- Traps
- Functions
- Interactive scripts

*Custom Cerulium Course. Please consult your Cerulium education specialists who will assist you in determining the best course(s) based on your Teradata experience, and learning requirements.*

[Return to Link List](#)